

Luc de Schepper module

Beyond Jung...

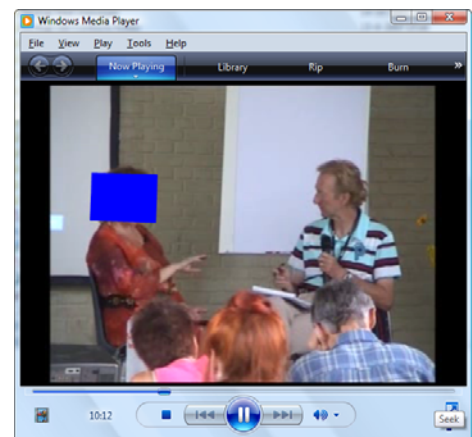
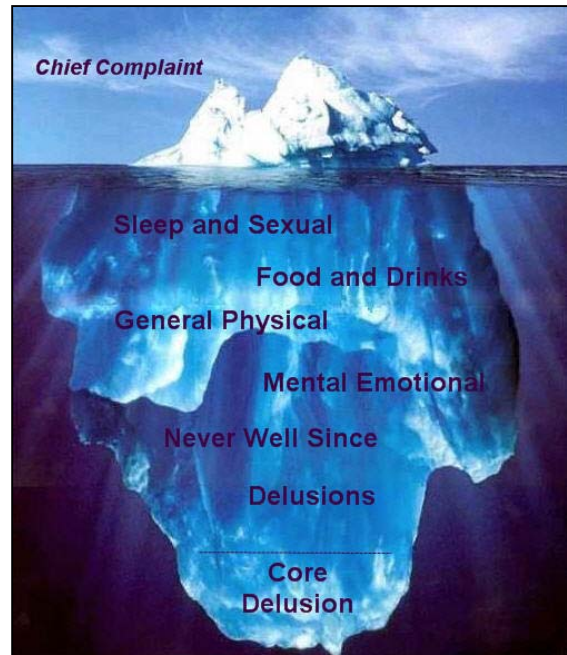
Analysing a case from the Chief Complaint to the Primary Core Delusion (Jung)

Within a few years Luc de Schepper has become one of the leading international teachers. He has a unique way of bringing the 'old' fundamental homeopathic teachings of Hahnemann into an 'updated' modern perspective.

He also brings our classical materia medica to life in such a way that you feel these 'old' remedies are strong powerful instruments -- tools that can tackle your difficult modern practice and its complex patient problems!

We are proud to offer you the 'Luc de Schepper module' for the Radar program. It includes:

- A Case-Taking Wizard.
- 50 Concepts + Patient Expressions pointing to all related Delusion rubrics in the repertory.
- 100 Core Delusions with short explanation.
- A Materia Medica database of all the remedies in the Concepts and the Core Delusions of the Encyclopedia Homeopathic program (EH).
- Several Multimedia files: 8 hours of video lectures (e.g. 11 Questions to confirm the simillimum, Intra Uterine questions), and Example Cases (several hours of live patient video, with full case analysis).



The Iceberg

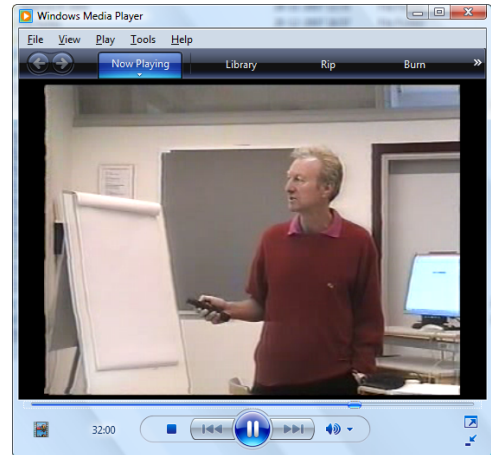
The symbol of the iceberg represents the homeopathic case analysis process. Most often the patients come to us with a Chief Complaint on the physical level.

We must always take into account the totality of symptoms, but we will only prescribe successfully if we **prescribe for the patient** with a disease, and not for the disease itself. Therefore we need to value all symptoms accordingly, which the module helps us to do.

The most valuable guide for your prescription is often the most deeply hidden. Often the 'simillimum' lies in the unconscious of the patient -- the deepest part of the iceberg.

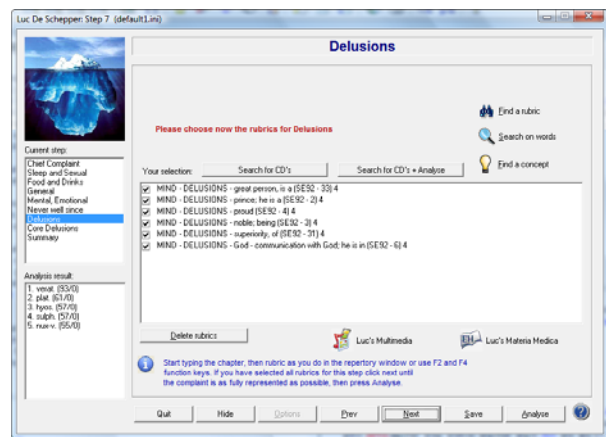
You always need to prescribe for the totality, the most characteristic, the most valuable, the A153 symptoms. You cannot take one single symptom, even an important one, out of the whole picture.

Every case tells a coherent story, and 'everything' in the patient's story has to fit the story of the remedy as described in EH. Ask yourself: Who is this person (Constitution, Temperament), extravert or introvert)? Why does he do what he is doing? What is his motivation?



Luc's Delusions + Core Delusion

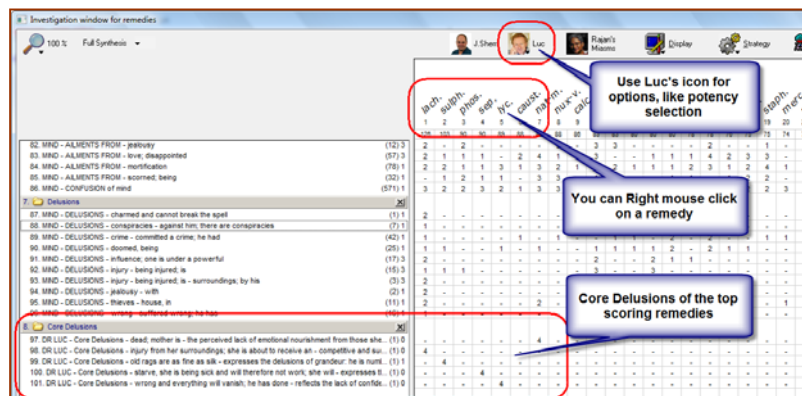
The **delusions** of the patient are the most difficult to find. By filling out the other clipboards first you will be able to see the top remedies of the patient case. At that point, the module presents you the **Core Delusion** of the leading remedies, each with its explanation, and you can decide which fits best the total story of your patient.



Definition:

The **Core Delusion** (CD) always contains a kernel of truth. A Core Delusion is the expression of the dominant, ruling emotion. It will be the driving force behind the actions, thoughts and plans of the patient, and it will create along the way secondary delusions. Therefore all compensations and secondary delusions have their origin in the Core Delusion.

As we all have a Core Delusion, everyone executes **compensations**. These can be regarded as defense mechanisms that help us flee from the Core Delusion when it is negative, or reinforce the Core Delusion when it is positive.. Every patient executes many compensations to avoid his inevitable fate: he will have to face this Core Delusion at some point in his life.



If the homeopath does not ask enough **“Why’s?”**,.... the patient will show him compensations that are far away from the Core Delusion. He will try to coach you into prescribing for the **mask** rather than the **shadow** side (a mask that is formed by all these compensations). This will lead to the selection of a **simile** and not the simillimum:

**“The Mask is the Simile;
the Shadow side is the Simillimum!”**

The Core Delusion is not taken out of context of the totality of the patient but simply expresses the most important characteristic of his totality.

**“The Core Delusion is the emotional or spiritual center,
surrounded by a cluster of images or ideas,
which are the patient’s compensations.”**

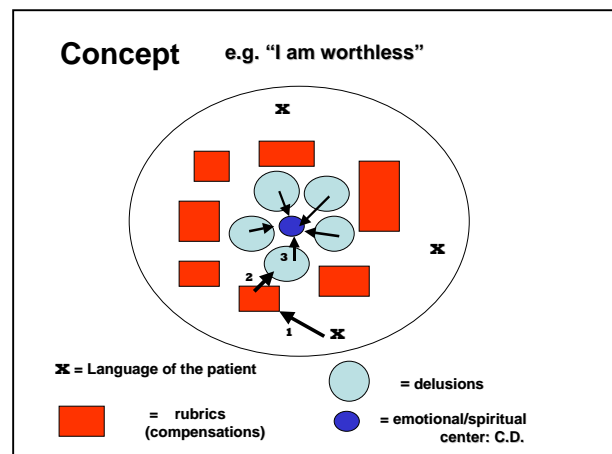
Luc’s Concepts

Luc’s Concepts contain more than 50 valuable **‘Super Rubrics’** with **‘patient expressions’** and **‘referring rubrics’** in the Synthesis Repertory. For a full differentiation of the main remedies mentioned in a concept, you can switch to Luc’s database in the EH program for a complete description.

Definition of Dr. Luc’s Concept

A concept (or we might use Jung’s term **Complex**) can be expressed by one or several words. It is usually the main

theme of long-term suffering that the patient links to painful recollections.



Information:

- For more information about the module ask you local Radar representative in your area. For dealer addresses see: www.archibel.com
- For Vlaanderen and The Netherlands: www.lutravision.com
- Website Luc de Schepper: www.drluc.com